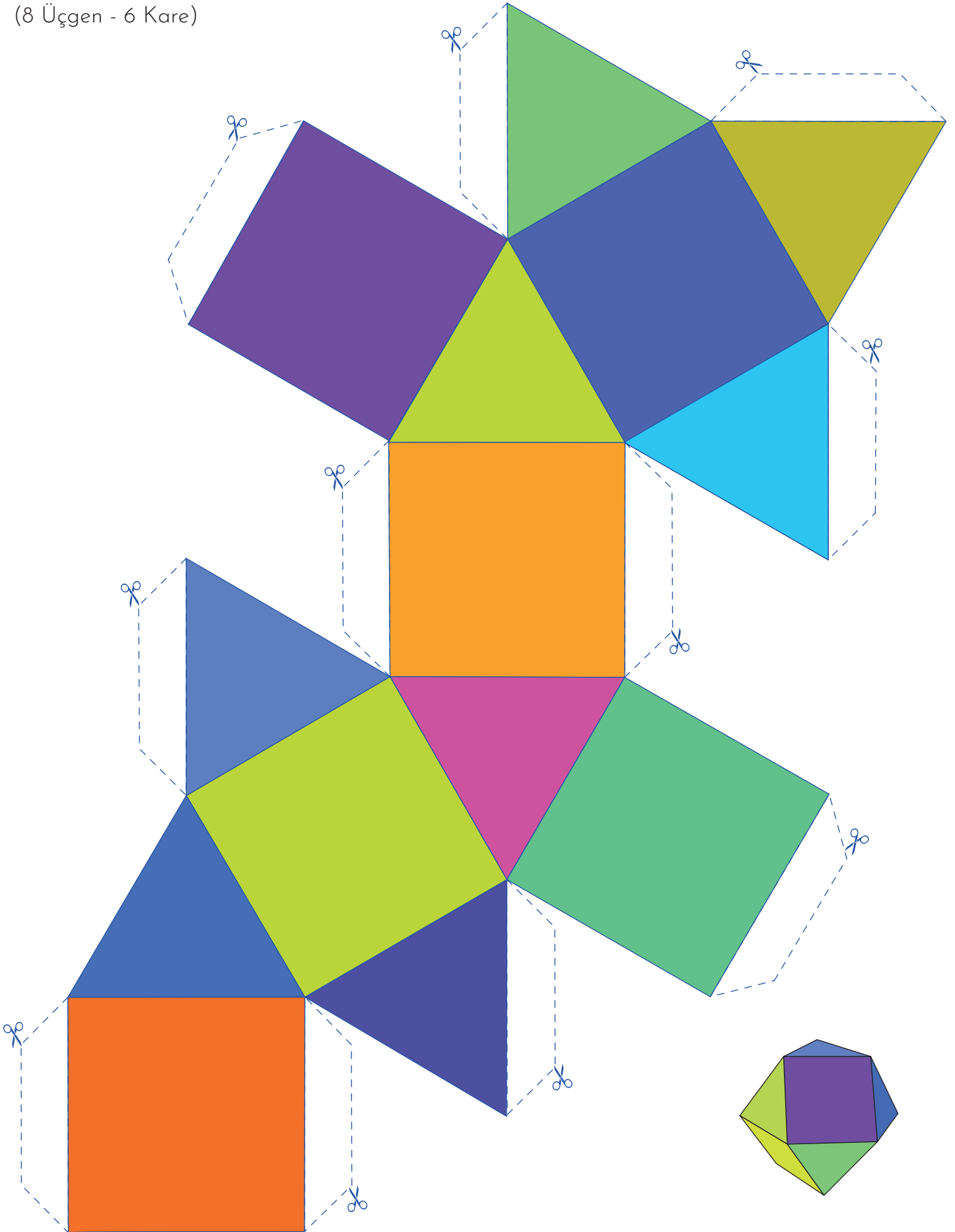


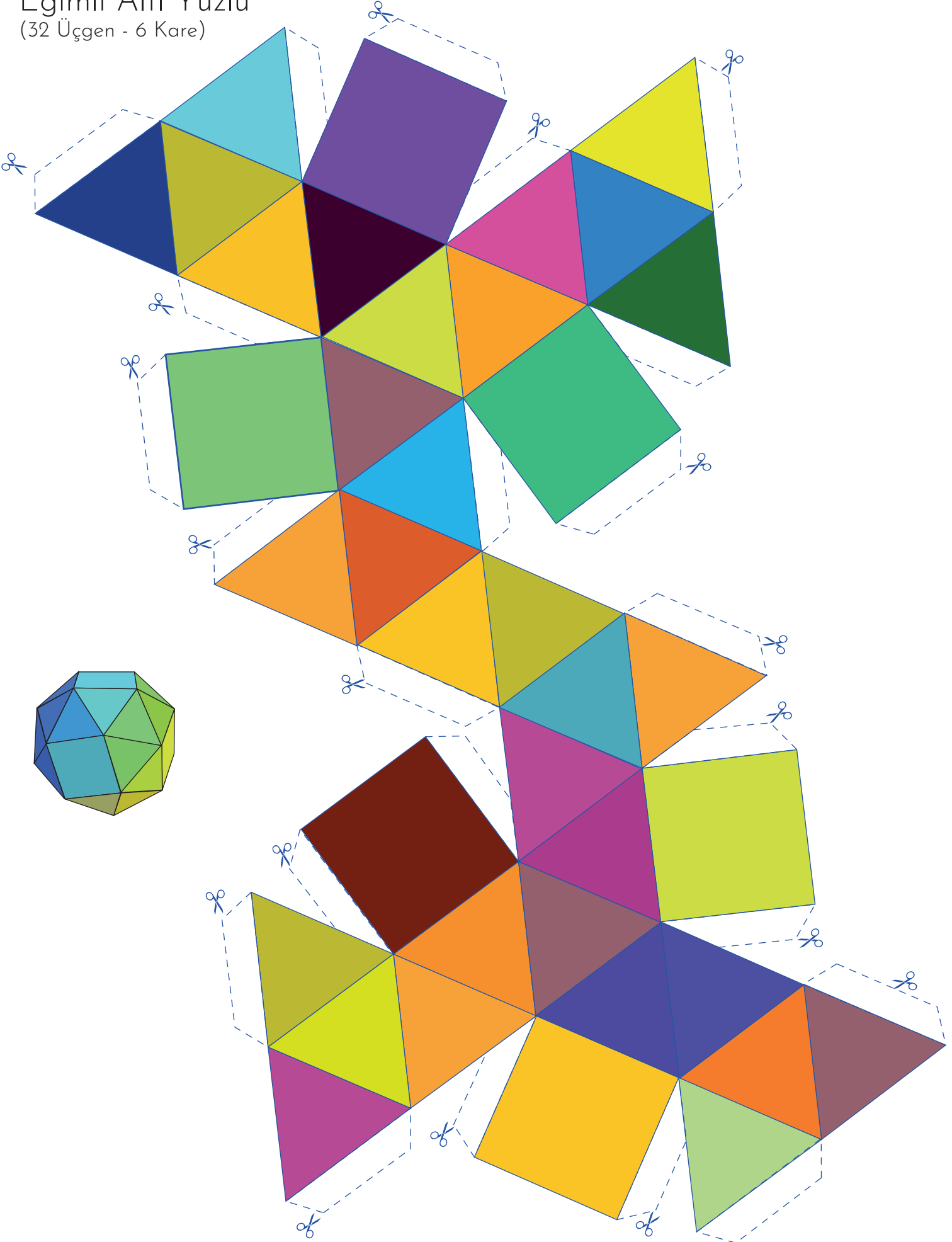
ARŞİMET CİSİMLERİ

Küboktahedronlar
(8 Üçgen - 6 Kare)



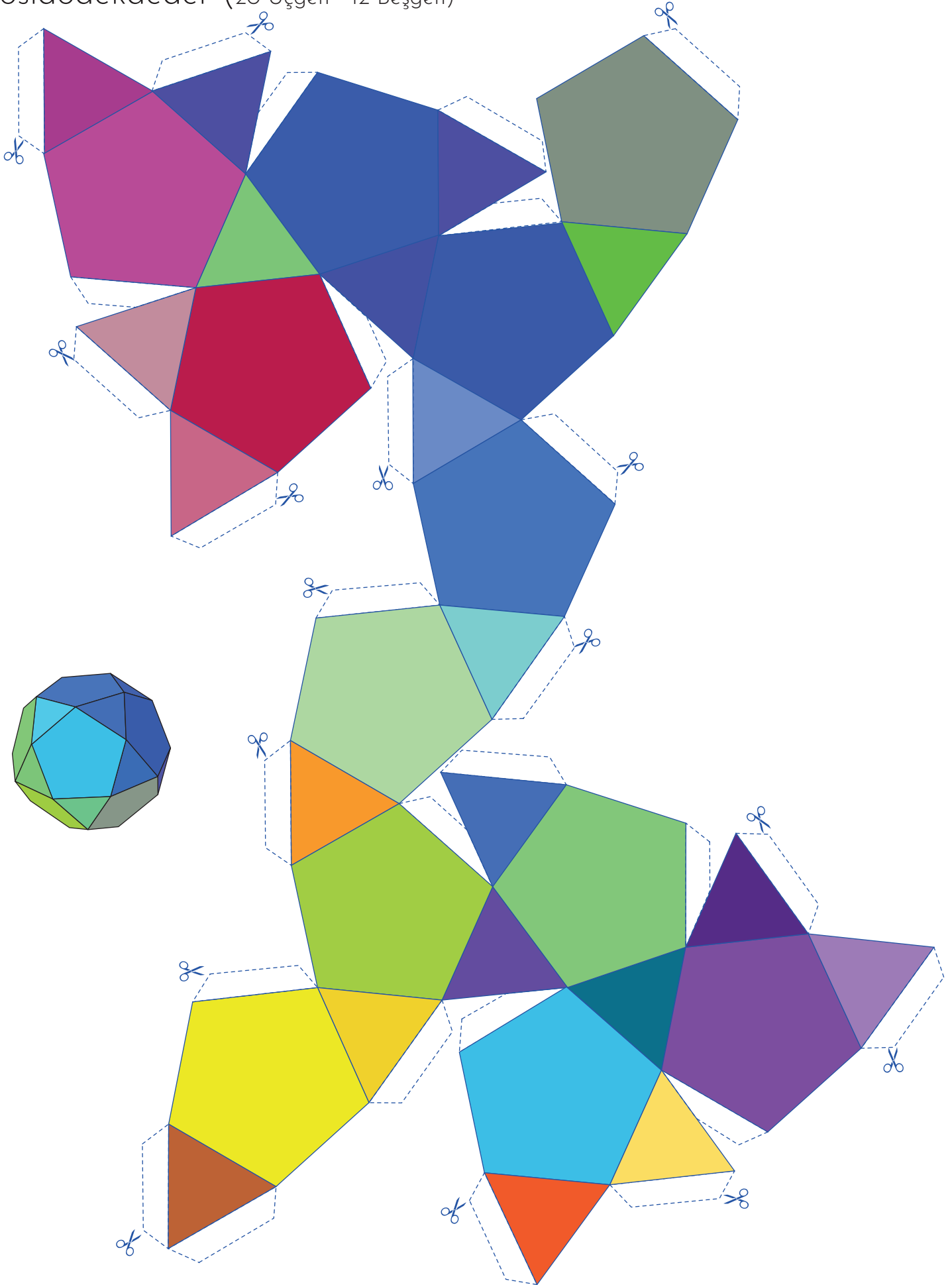
ARŞİMET CİSİMLERİ

Eğimli Altı Yüzlü
(32 Üçgen - 6 Kare)



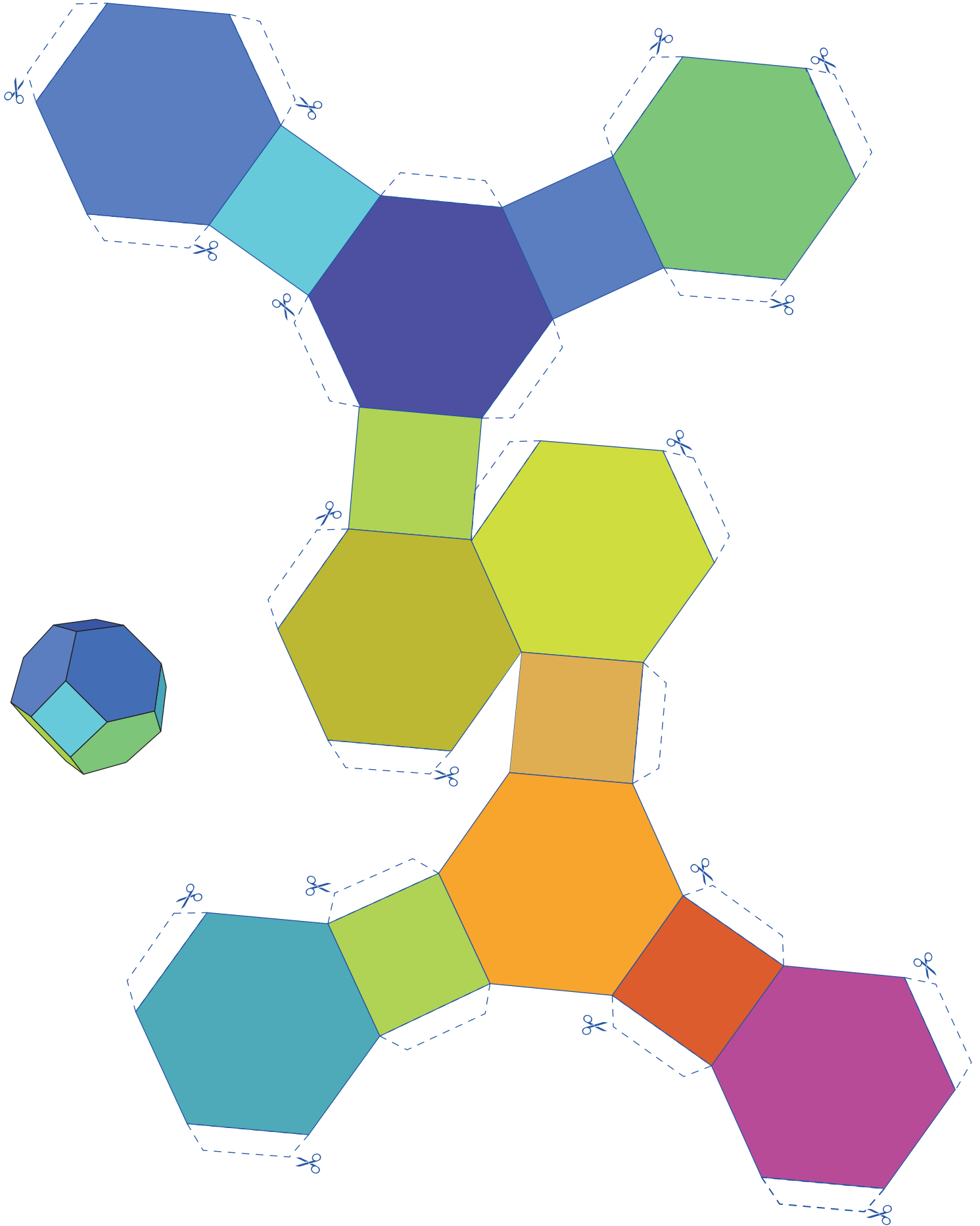
ARŞİMET CİSİMLERİ

İkosidodekaeder (20 Üçgen - 12 Beşgen)



ARŞİMET CİSİMLERİ

Kesik Oktahedron (6 Kare - 8 Altıgen)



ARŞİMET CİSİMLERİ

Kesik İcosahedron
(12 Beşgen - 20 Altıgen)

